

BISHOP SUITES @ THE EXECUTIVE CENTRE

Aloha!



2026 FACT SHEET

BISHOP SUITES @ THE EXECUTIVE CENTRE | O'AHU

Discover the perfect balance of comfort, convenience, and local charm at Bishop Suites, located within the Executive Centre Hotel in the heart of downtown Honolulu. Just minutes from historic landmarks, Chinatown eateries, and scenic waterfront walks, our spacious, condo-style suites offer more than a place to stay—they give you room to live, work, and unwind.

Each suite includes a full kitchen and living area, ideal for extended stays or remote work. With a prime location near the Hawai'i State Capitol, 'Iolani Palace, and local dining gems, you're perfectly positioned to explore the city. Select high-floor units feature stunning mountain and city views, while onsite parking and easy access to major highways and Honolulu Airport make getting around a breeze.

1088 Bishop Street
Honolulu, Hawai'i 96813
P: (844) 207-9254
www.castleresorts.com

CASTLE 
RESORTS & HOTELS

BISHOP SUITES @ THE EXECUTIVE CENTRE 26 UNITS | 40 FLOORS | 4 GUEST ELEVATORS

SERVICE

- Front Desk: Room 504
- Front Desk Hours: 9:00 am - 7:00 pm
- Check-in 3:00 pm
- Check-out 11:00 am
- All major credit cards accepted

HOTEL AMENITIES

- On-site laundry facilities (\$)
- Swimming Pool
- Luggage storage
- Hot tub and sundeck
- Self-parking (\$)

RECREATION & ENTERTAINMENT

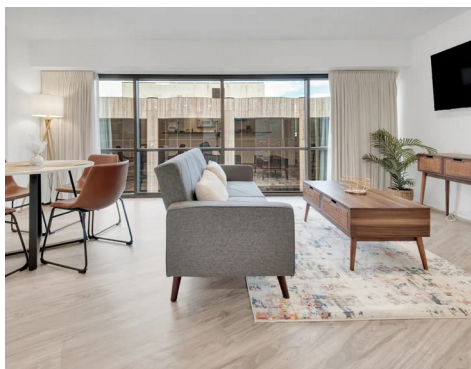
- Historic Chinatown Arts District nearby
- 'Iolani Palace nearby
- King Kamehameha Statue nearby
- Short distance to the Aloha Tower / Honolulu Harbor
- Swimming beach nearby

ROOM AMENITIES

- Air conditioning
- Coffee Maker
- 2 Flat Screen TVs
- All rooms non-smoking
- Wireless Internet access
- Hair dryer
- In-room refrigerator
- Iron/Ironing board
- Dishwasher (1 Bedroom Units Only)
- Washer & Dryer (1 Bedroom Units Only)
- Microwave
- Shower/bathtub
- Telephone/Voicemail
- Electronic Key card

POINTS OF INTEREST

- Central Business District - 1 block
- Hawaii Pacific University (Downtown campus) - 1 block
- Pauahi Tower (Bank of Hawaii Building) - 1 block
- Chinatown Cultural Plaza - 0.5 mi
- Maunakea Marketplace - 0.5 mi
- Aloha Tower Marketplace - 0.6 mi
- Cathedral Church of Saint Andrew - 0.7 mi
- Izumo Taishakyo Mission of Hawaii (Hawaii Izumo Taisha Shrine) - 0.5 mi
- Honolulu Hale - 0.9 mi
- Kawaiaha'o Church & Mission Houses - 0.9 mi
- Ala Moana Center/ Beach Park - 1.6 mi
- Nu'uuanu Pali Lookout - 5 mi
- Honolulu International Airport - 6 mi
- Pearl Harbor National Memorial - 9 mi
- Oahu's North Shore - 28 mi



GUEST ROOMS Category

	Type of Bedding*	Guests	Area ft ²
Mountain View Suite	Q + FFSB	3	525
One Bedroom Mountain View - Suite	Q + FFSB	3	650
Ocean View Suite	Q + FFSB	3	591
One Bedroom Ocean View Suite	Q + FFSB	4	798

*Type of Bedding: Q=Queen / FFSB=Full Fold Sofabed

**Rates vary by day, by season, and year-end pricing may apply. Blackout Dates may apply. Rates are subject to applicable taxes. Rates and taxes are subject to change without notice. Area footage is approximate and can vary per unit.

*** A mandatory resort fee of USD 29.49 is charged per accommodation, per night. This fee includes beach towels, in-room coffee, and pool access. A refundable security deposit of USD \$250 is required at check-in.

WORLDWIDE RESERVATIONS

For reservations, please contact our reservations office, your travel consultant,
book online at: www.castleresorts.com, or via email at: reservations@castleresorts.com
P: (844) 207-9254